



UNIVERSAL DUAL CAB UTE ADVENTURE RACK

IMPORTANT! – READ BEFORE INSTALLATION

- This product must be installed exactly as per these instructions using only hardware supplied.
- Take a few moments to read instructions thoroughly before beginning work.
- In the event of damage to any component please contact OFFROAD ANIMAL to arrange repair/replacement of components.
- Do not remove labels from this product.
- This product and its fixings must not be modified in any way unless stated in these fitting instructions.
- The installation of this product is recommended for trained personnel.
- These instructions are correct at time of publication. OFFROAD ANIMAL cannot be held responsible for the impact of any changes subsequently made by the vehicle manufacturer. If you find something has changed please contact us to let us know!
- During installation it is the duty of the installer to check correct operation/clearances of all components.
- If Instructions are to be printed for reference in the workshop, it is recommended that they are printed in colour, for best legibility.
- **Approx. Install Time 2 Hours**

GENERAL CARE AND MAINTENANCE

Only wash the product with a PH neutral car wash to prevent paint damage and discolouration.

Plastic parts may be maintained with silicone spray.

Do not use acidic or alkaline based cleaning products.

It is important to perform regular checks (pre trip or on an annual basis) on the installed product. Checks include:

- Visual inspection for damage (eg. cracks, chips, dents etc.)
- Electrical wiring is not rubbing anything or worn out
- Bolts are torqued to correct specification (see torque guide below)

For touching up small stone chips, Offroad Animal recommends the following paint products:

- Dupli-Color Trim & Bumper Paint Black (TB101)
- VHT Hood, Bumper & Trim Paint Black (SP27)

BOLT TORQUE SETTINGS

Use the following bolt torques on all general fasteners, unless otherwise specified.

GENERAL FASTENERS	
Size	Torque Nm
M5	5 Nm
M6	9 Nm
M8	22 Nm
M10	44 Nm
M12	77 Nm

Use the following bolt torques on all structural front bar mount and tow point fasteners, and rear towbar fasteners, unless otherwise specified.

FRONT BAR MOUNTS AND TOW POINTS + REAR TOWBAR	
Size	Torque Nm
M10	57 Nm
M12	100 Nm
M14	164 Nm
M16	248 Nm

Always use a torque wrench to set correct torque settings. Ensure torque wrench is set to Nm unit of measurement. Otherwise perform conversion to lb-ft.

PARTS LISTING

IMPORTANT: Check all parts are present before beginning work! Contact OFFROAD ANIMAL if something is missing.

Base Kit Main Parts – In the Box

Qty	Part Number	Description	Image
2	ADVR-DC-COM-ASM2L	Adventure Rack- Side Arm Assy Left Hand	
2	ADVR-DC-COM-ASM2R	Adventure Rack- Side Arm Assy Right Hand	
2	B-0357	Flat side Basket- Adv Tub Rack	
2	ADVR-DC-COM-ASM3	Adv Rack Tub Rail Assy	
1	B-0354	Adv Rack- Centre Basket	

2	B-0357	Flat Side Basket - Adv Tub Rack	
(Optional Extra) 1	TR-FRA	Roller shutter kit Optional extra	

Base Kit Small Parts – Contained in Small Parts Kit Bag

Qty	Part Number	Description
10	M8 FLAT WASHER- ZINC HD	M8 FW- ZINC- HD
4	M8x20 Cap Screw	Cap Screw, M8x20 Cap screw
12	M8 X 16 BHCS BLACK ZINC	SCREW, BUTTON HEAD CAP, M8X16X1.25 BLACK ZP
20	M8 FLANGE NUT	Flange Nut, M8x1.25 G8.8 ZP
26	M8 FLAT WASHER- BLACK ZINC	M8 FW- BLACK ZINC-
16	M6 FW BZ	M6 Flat washers black zinc
16	M6x16 BHCS Black Zinc	M6 FW Black ZP
6	M8 x 45 BHCS BZ	M8 x45 Button head cap screw Black Zinc
6	M8 NN	M8 Nyloc nut
8	M8 x 20 BHCS BZ	M8 x 20 button head cap screws black zinc
2	OFA-LOGO	OFFROAD ANIMAL METAL LOGO

TOOLS REQUIRED

The following tools will be required to install the product.

Hand Tools	Power Tools	Workshop Equipment
Hex (Allen) Key Set 4-6mm Metric Socket Set 10-13mm	Electric Drill 9mm drill bit	Paint pen or Permanent Marker Centre punch

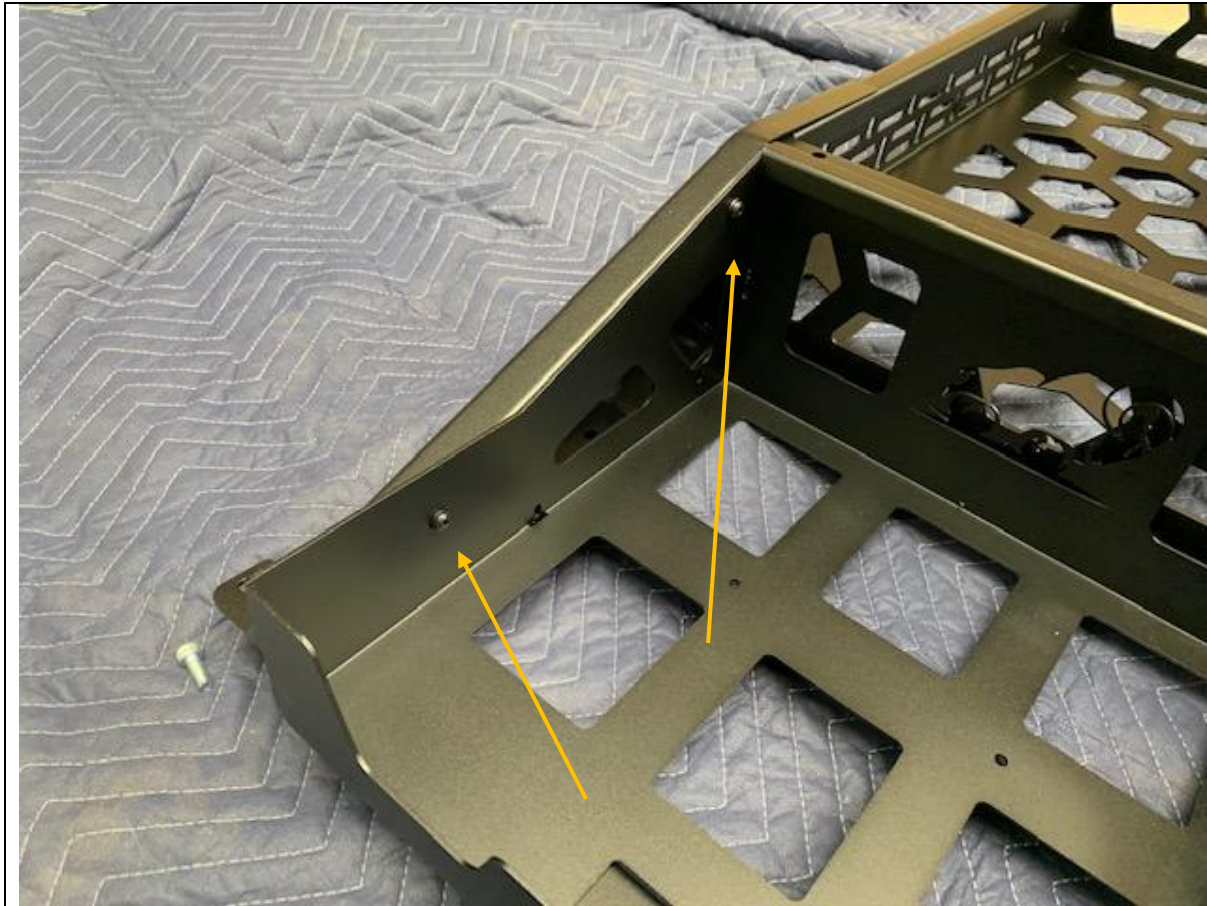
WORKSHOP SAFETY

It is the responsibility of the installer to always complete works in a safe manner. Make sure the following safety equipment is available and precautions are observed whilst fitting this product.

<p>Hearing Protection</p> 	<p>Always wear ear protection when using power tools.</p>
<p>Eye Protection</p> 	<p>Ensure eye protection is always worn when cutting or drilling.</p>
<p>Manual Handling</p> 	<p>Do not attempt to lift bar assemblies or rock sliders on your own.</p> <p>Always use two people to lift or use mechanical Lifting aid such as hydraulic lifting trolley.</p>
<p>Vehicle Support</p> 	<p>Always ensure vehicle is properly supported when working on it. Do not attempt to fit products whilst suspension work is being carried out. Do not work under a vehicle supported only by a jack.</p>



<div>1. Start by assembling the Adventure rack on the ground, away from the vehicle. Make sure everything is accounted for.</div>	TOOLS REQUIRED
	FASTENERS



2. Fit side arm to flat basket with M6 button head cap screw and washers. Leave bolts loose.
3. Do LH and RH of basket.
4. Repeat for other side.

TOOLS REQUIRED

4mm Hex Key

FASTENERS16x M6x16 Button head bolt
16x M8 Flat Washer



5. Slide side arm assembly over centre basket as shown and loosely fit M8 hardware to keep arm attached. Leave all hardware loose.

TOOLS REQUIRED**FASTENERS**

6x M8x16 Button head bolt
6x M8 Flange Nut
6x M8 Flat Washer



6. Repeat for other side.

7. The Adventure rack is now ready to lift on to your tub, but first we need to install the mounts.

TOOLS REQUIRED**FASTENERS**

6x M8x16 Button head bolt
6x M8 Flange Nut
6x M8 Flat Washer




8. Follow steps 10-18 if fitting Adventure rack to a tub with no roller shutter. Place Assy side rail on to tube where you want the adventure rack to sit.
9. If fitting Adventure rack to a roller shutter skip to step 19.

TOOLS REQUIRED

G Clamps or Vice Grips
Marker

FASTENERS

	
<div>10. Mark at least 3 locations on top, and a minimum of one on each side but 2 would be better. Do this for one side only.</div> <div>11. Center punch all hole locations.</div> <div>12. Drill 9mm diameter hole through locations marked and punched. On top face ensure hole goes through both layers of tub.</div> <div>13. Paint all exposed edges with paint pen to prevent corrosion.</div> <div>14. Secure with M8x45 Button head bolts, flat washers and Nyloc Nuts, through top face and M8x20 Button head bolts, flat washers and Nyloc Nuts through the side face.</div>	<div>TOOLS REQUIRED</div> <div>Drill 9mm Drill Bit Center Punch Paint Pen</div>
	<div>FASTENERS</div> <div>M8x45 Button Head M8x20 Button Head M8 Flat Washer M8 Flange Nut</div>



<div>15. With assistance from a friend, fit Adventure rack to tub.</div> <div>16. Position other side Rail Assembly and mark and drill as per previous page.</div> <div>17. Secure with M8x45 Button head bolts, flat washers and Nyloc Nuts, through top face and M8x20 Button head bolts, flat washers and Nyloc Nuts through the side face.</div> <div>18. Tighten all bolts, using 5mm Hex key and 13mm spanner.</div>	<div>TOOLS REQUIRED</div> <div>Drill</div> <div>9mm Drill Bit</div> <div>Center Punch</div> <div>Paint Pen</div> <div>5mm Hex Key</div> <div>13mm Spanner or socket</div>
	<div>FASTENERS</div> <div>M8x45 Button Head</div> <div>M8x20 Button Head</div> <div>M8 Flat Washer</div> <div>M8 Flange Nut</div>



19. If fitting onto a roller shutter you will need our straight or angled roller shutter mounts depending on which roller shutter you have. Installation is the same for both.

TOOLS REQUIRED**FASTENERS**



20. Fit 6x small rectangular nuts into slot on roller shutter per side.	TOOLS REQUIRED
	FASTENERS 6x M6 nut plates



21. Lift mounting rails onto roller shutter and secure with M6 hardware.
22. Repeat for other side. These are handed so make sure you position them correctly as you want it to sit on the ute with the adventure rack in the position you desire.

TOOLS REQUIRED

4mm Hex key
13mm spanner

FASTENERS

12x M6x12 Button head bolt
12x M6 Flange Nut
12x M6 Flat Washer



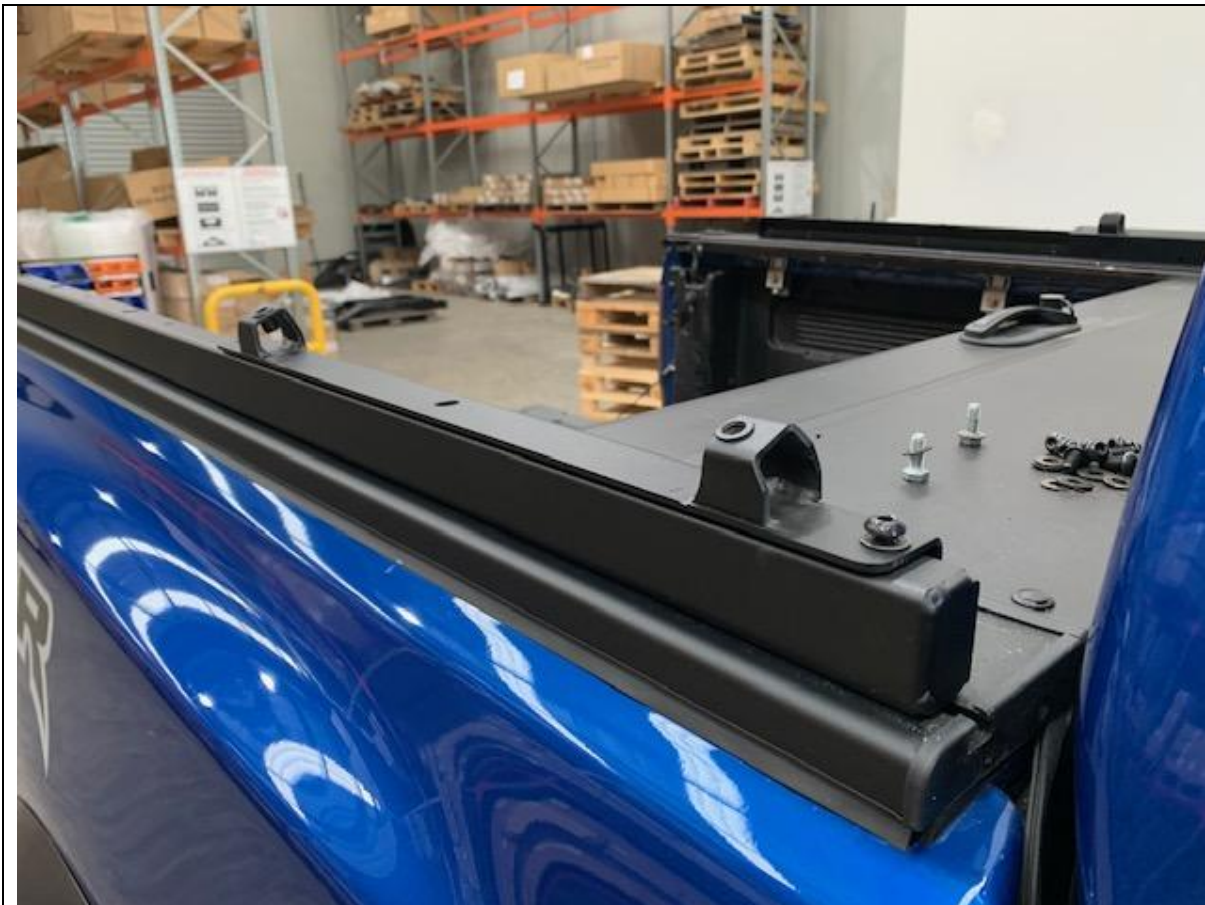
23. Drop Tub Rail assy on top roller shutter mount and secure with at least 4 M8 screws per side.

TOOLS REQUIRED

5mm Hex key

FASTENERS

4x M8x20 Button head bolt
4x M8 Flat Washer



24. Repeat for other side.

TOOLS REQUIRED

5mm Hex key

FASTENERS

4x M8x20 Button head bolt
4x M8 Flat Washer



25. Lift Adventure Rack on to Assy Rail.

26. Feed M8 Cap screws into end and secure down using heavy duty washers.

TOOLS REQUIRED

6mm Hex key

FASTENERS

4x M8x20 Socket screw
4x M8 HD Flat Washer



27. Spread out the Rack so both ends of the rack fit the Rails.

28. Torque down all bolts

TOOLS REQUIRED

5mm Hex key
13mm spanner

FASTENERS

4x M8x20 Button head bolt
4x M8 Flange Nut
4x M8 Flat Washer



<p>29. If fitting small space case to flat basket, you'll need to drill holes in from inside box and secure down. This will allow you to open the box without removing it, and prevent it from being stolen.</p>	<p>TOOLS REQUIRED</p> <p>Drill 9mm drill bit</p>
	<p>FASTENERS</p>



30. If fitting Jerry cans , just pop them up on to the flat rack and secure with a ratchet strap.

TOOLS REQUIRED**FASTENERS**



31. The centre basket has many slots for mounting any accessory you want. Shown above is a Hi-lift jack and shovel holder purchased off Ebay.

TOOLS REQUIRED**FASTENERS**



<p>32. If fitting centre space case, secure down with ratchet strap running from handle to handle underneath rack so you can still open the box.</p>	<p>TOOLS REQUIRED</p> <p>Ratchet Strap</p>
	<p>FASTENERS</p>



You're all set now, go out and enjoy your new rack.